

Girl Scout Juliette Guidebook





About Girl Scouts

Girl Scouts has been blazing the trail and redefining what's possible for girls for over 100 years! Girl Scouts was founded in 1912 by Juliette Gordon "Daisy" Low. When you participate in Girl Scouts, you join a sisterhood of more than 3.2 million girls and adults.

As a Girl Scout, girls discover the fun, friendship, and power of girls working together. Girls grow courageous and strong through a wide variety of educational, high-adventure, and skill-building activities. This programming ensures girls receive equal access to expand their areas of expertise and give them skills needed to gain equity across gender lines.

As the largest girl leadership organization in the world, we ask you to join us to ensure girls have our support growing up to learn they will achieve their full potential and to have an equal seat at the table.

What grade level is for me?

To ensure the best experience for each Girl Scout at all ages, programming is divided by grade levels. The Juliette program is available to all girls in grades kindergarten through 12.

Girl Scout Daisy: Grades K-1

Girl Scout Brownie: Grades 2-3

Girl Scout Junior: Grades 4-5

Girl Scout Cadette: Grades 6-8

Girl Scout Senior: Grades 9-10

Girl Scout Ambassador: Grades 11-12

Girl Scout Promise

On my honor, I will try:
To serve God and my country.
To help people at all times,
And to live by the Girl Scout Law.

Girl Scout Law

I will do my best to be:
honest and fair,
friendly and helpful,
considerate and caring,
courageous and strong,
and responsible for what I say and do,
and to:
respect myself and others,
respect authority,
use resources wisely,
make the world a better place,
and to be a sister to every Girl Scout.





Becoming a Juliette helps you continue your own personal leadership adventure!

About the Juliette Program

As a Juliette, you can participate individually in everything open to Girl Scouts in your grade level. At Girl Scouts Heart of Michigan, you can attend program events, overnight & day camp, travel opportunities, Mackinac Island Service Program, and more! Participating in our Product Programs - Cookies and Treats & Reads - can fund your Girl Scout events and experiences. Whether you chose the Juliette pathway or are awaiting to be connected to a troop, you are able to get the full Girl Scout experience!

In the Juliette program, you will work on Girl Scout programs with an adult mentor such as a parent or another family member or friend. You decide what activities to participate in and which earned recognitions and awards you will complete. You deserve a place to voice your thoughts and explore your interests, and now as a Juliette, Girl Scouts is here to help!

What Can a Juliette Do?

- Complete a Girl Scout Journey and earn badges...pg 5
- Earn the Bronze, Silver, and Gold Award...pg 6
- Attend events...pg 6
- Go to Camp...pg 7
- Travel the World...pg 7
- Be in Mackinac Island Scout Service Program...pg 7
- Participate in our Product Programs...pg 8

How do I register to be a member?

Register online at gshom.org! Juliette mentors, parents, guardians, and other adults are encouraged to become members of Girl Scouts, to participate in Girl Scout activities and events with their Juliette. Mentors who participate in product program must be registered.

How much does it cost?

There is no value comparable to a girl on a mission. The \$45 Annual Membership Dues per girl* seems so small in comparison to all the skills and confidence she'll gain. Adult membership is \$25 per year.

*Financial assistance is available for Annual Membership Dues and certain activities.

Check us out online for more Girl Scout fun!





Juliette Finances

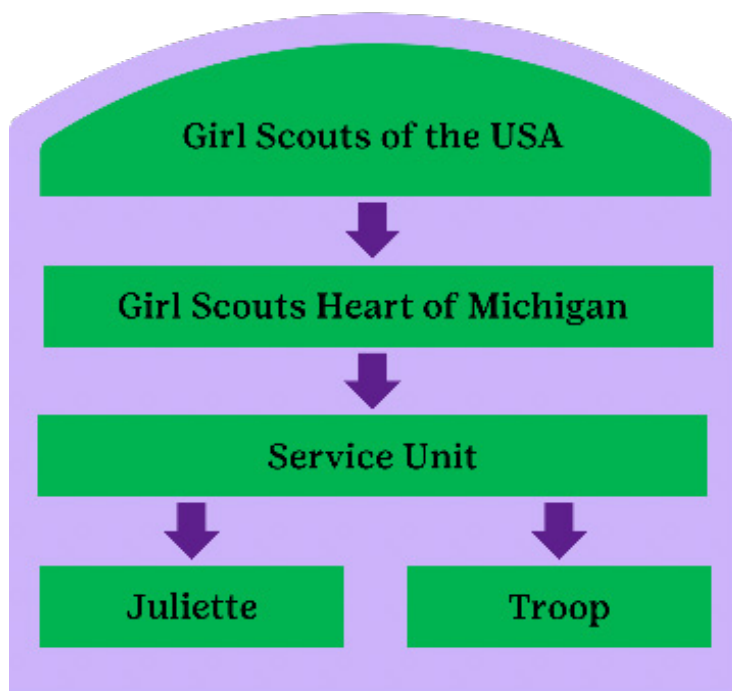
Juliette's funds are handled differently from a Troop's. As a Juliette, your funds are held by Girl Scouts Heart of Michigan. Juliettes can raise funds via the product programs. They then receive the funds through a gift card from Girl Scouts Heart of Michigan that can be used to finance camp, programs, higher awards, retail purchases in any of our five regional stores, and membership fees.¹

Juliettes are unable to raise funds through other money-earning activities unless it is for Bronze, Silver, or Gold Awards. If that is the case, you will need to connect with awards@gshom.org for the process.

How am I Connected?

Although Juliettes don't have a troop, they are not alone! Juliettes have support coming in at all levels of the organization. Check out the diagram below to see how you fit in among your 12,000 GSHOM sisters.

As a Girl Scout member, you are part of a Girl Scout Service Unit. The Service Unit is designed to serve Girl Scouts like you within a geographical location, usually divided by one large community or several smaller communities. Most Service Units host local events, and Juliettes are encouraged to attend! To connect with your Service Unit, reach out to the Help Desk (1-800-497-2688 or helpdesk@gshom.org). Reach out to Help Desk at any point in time if you are in need of support or help.



1. Per the IRS, "a section 501©(3) organization must not be organized or operated for the benefit of private interests. No part of the net earnings of a section 501©(3) organization may inure to the benefit of any private shareholder or individual."

Being a Juliette is all about being the best you!

The Girl Scout Program, or Girl Scout Leadership Experience (GSLE), is designed to help you develop as a leader and build confidence through learning new skills. You don't have to do it alone! With help from our world-class badge programming and tons of resources on our website, you will have a reference to the Girl Scout world, awards, badges, skill building, and more.



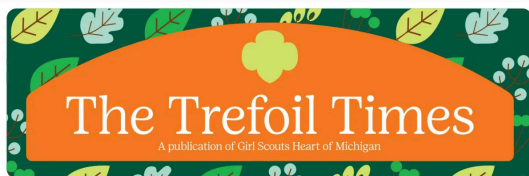
Scan to join Rallyhood today!

There are Leadership Journeys for each grade level, and each is customizable to your interests. Each one also has a corresponding adult guide for your mentor. Combined with the Treefoil, our quarterly program guide, you will be ready for anything, whether that be girl awards, camp, travel, or the Product Program.

Attend Meetings and Stay Informed

Each month, Girl Scouts Heart of Michigan hosts a virtual meeting where Juliettes and their mentors meet with GSHOM staff to discuss upcoming events, opportunities, news, and other important information.

Another way you, as a Juliette, can remain informed is on Rallyhood. Rallyhood is a one-stop communication platform for Girl Scouts Heart of Michigan. By joining the Juliette Rally, you can instantly connect to other Juliettes, mentors, and staff to find information, and make new friends!



Back to school, back to Girl Scouts!

Summer has flown by, and we are gearing up for an exceptional new Girl Scout year! Throughout this edition of *The Trefoil Times*, you'll find lots of information about how you can begin the upcoming Girl Scout year strong!

Have you renewed your membership yet?

Don't forget that for every 100 members who join or renew before September 30, 2024, we will draw a winner for a Stanley tumbler and a Lululemon belt bag!



August 2024 • Issue 2

Sneak peek of everything inside this edition:

Step-by-step guide to your best Girl Scout year yet.

Important dates to save in your calendar.

Must-have Girl Scout fashion items.

Events and programs you won't want to miss.

And more!

Email marketing@gshom.org to let us know what you'd like to see in future editions or for your troop to be spotlighted!



The Trefoil Times

Welcome to The Trefoil Times, our new quarterly publication that will be sent out to all members of Girl Scouts Heart of Michigan! The Trefoil Times will feature all the information needed to plan an incredible Girl Scout year like important dates and upcoming programs.



Scan to see our latest issue of the Trefoil Times and keep an eye out in your mailbox for the next issue!



Attend Events

As a Juliette, you can connect with other Juliettes to share experiences with other sister Girl Scouts. Events are a great way to meet sister Girl Scouts and their families in your area. Check out Me and My Gal or Me and My Guy weekends at camp or meet with other Juliettes at a Girl Scout event.

All experiences in Girl Scouting incorporate the Discover, Connect, and Take Action Keys to Leadership while also encourage girl-led opportunities, learning by doing, and cooperative learning, which promotes fun and friendship in Girl Scouting! Take a look at our 2023-2024 programs available now to register.

Find a list of our properties you can visit on page 11!

Complete Service Projects

As girls progress through the grade levels Daisy to Ambassador, there are opportunities to provide a deeper understanding of what it means to be a leader who makes a difference in the world.

The Girl Scout Bronze, Silver, and Gold Awards are the highest achievements in Girl Scouting. To begin the Bronze Award, you will recognize a cause in your community that you are passionate about and then create a service project addressing that opportunity. The Bronze Award can be awarded to Juniors, continuing with the Silver Award as a Cadette. When you reach Senior or Ambassador level, you can earn the Gold Award – the highest honor in Girl Scouting.

The Gold Award will elevate any college, scholarship, or job application, making your application submission more competitive. The Gold Award is also one of the few youth service awards you can keep on your resume forever. There are also many college scholarships available to Gold Award Girl Scouts.



More Girl Award information and guide packets can be found at gshom.org!



Find a list of our properties you can visit on page 11!

Go to Camp

Juliettes can attend any of our camps and cabin facilities! We offer day and overnight camps as well as whole-family camp options for you to explore.

Girl Scouts provides you with the chance to push yourself with new outdoor experiences. We offer horseback riding, canoeing, white water rafting, rock climbing, target sports, and many more! We know when girls push themselves, they gain the confidence and courage to be ready for anything.

We have new camp guides every summer! Check 'em out at girlscoutcamp.org!



There are five World Centers Girl Scouts can visit!

Travel the World

You can discover your city, state, country and the world in Girl Scouts!

Juliettes take their leadership skills around the world! Girl Scouts gives you many opportunities to explore your community and many others locally and globally.

Experience new cultures and learn from Girl Scouts and Girl Guides worldwide! You can travel with Girl Scouts Heart of Michigan and Girl Scout Destinations through Girl Scouts of the United States of America.



Mackinac Island Scout Service Program

At Girl Scouts Heart of Michigan, we offer two programs for Cadettes through Ambassadors on Mackinac Island.

Since 1974, Girl Scouts have had the honor of serving in the Mackinac Island Scout Service Program. It is an opportunity for you to play a vital role on historic Mackinac Island. Select applicants serve the State of Michigan for seven days by taking part in tasks including flag ceremonies, guide duties, and service projects.

You can join either troop 609 or 7901! Applications are on gshom.org



Product Program

Juliettes have the opportunity to participate in the largest girl-led business in the world – the Girl Scout Cookie Program and the Fall Treats & Reads Program. When you participate in these programs, you can earn Girl Scouts Heart of Michigan credit, product program rewards including cookie/cashew cash to be spent on Girl Scout swag, programs, registration or camp.

Juliette caregivers/mentors must be a registered member, attend training, and sign a troop product manager agreement.¹ Juliettes will need a signed permission slip to participate. Materials will be available upon completion of training from your nearest Regional Center or your Service Unit Product Manager (SUPM).

Juliettes earn credit in each sale based on a tiered rate. For every \$25 sold in Treats in Reads, a \$4 credit is earned. For 10-25 package of cookies sold \$10 is made. For 25-174 packages sold, \$23.50 is made for each band of 25 packages. If you sell 175-224 packages of cookies, \$24.75 is made for each 25 packages sold. Lastly, if you sell over 225 packages, \$26.00 is made from each 25 packages sold.

The credit will be issued on a Juliette card and is valid for 5 years after acquired. As you work to earn credits & rewards, you will also be helping to support overall operation of the council which benefits you and of all your sister Girl Scouts. You will develop the 5 Skills, which will make you a stronger leader and help you grow your courage, confidence, and character!

Learn the 5 Skills to Make YOU a Stronger Leader!

- 1 Goal Setting
- 2 Decision Making
- 3 Money Management
- 4 People Skills
- 5 Business Ethics

Girl Scouts Heart of Michigan Credit can be used for GSHOM:

- Program Events
- Day Camps and Overnight Camps
- Girl Scout Membership Dues
- Shop Merchandise
- Official Girl Scout Destination Trips
- Council approved Bronze/Silver/Gold Award Projects

1. You must be in good financial standing with Girl Scouts Heart of Michigan to participate in product programs.

To get started with the Product Program, please contact your SUPM or your local Product Program Specialist. Contact information is on page 9.

Adult Information

As a Girl Scout, your girl will:

- Experience a sense of belonging by being a member of the world's largest organization for girls.
- Have fun with a purpose!
- Prepare her future through career exploration, community engagement, and skill building.
- Develop leadership skills and self-awareness, building confidence and self-esteem.
- Voice what's important to her!
- Gain an understanding and appreciation of many people and cultures.
- Strengthen her understanding of herself.



Being a Juliette Mentor is easy!

Here is your role:

- Support your Girl Scout's participation in Product Programs.
- Attend program events, camps, or other activities.
- Make sure any necessary forms (health history, product program slips, etc.) are submitted in a timely manner to the appropriate person.
- Help your Juliette choose the Journey books and badges that interest her.
- Decide with your Juliette when to meet and do Girl Scout activities.
- Attend monthly Juliette meetings and join the Juliette Rallyhood pages.
- Discuss with your Juliette how to create a budget to help her reach her goals and earn her way to all the exciting programs and camps available.
- Review council programs offerings and camp opportunities your Juliette can attend with you (or, if a program allows it, on her own).
- Provide transportation, arriving and picking up your Juliette on time for all Girl Scout activities.

A Juliette Mentor is an amazing adult who guides a Juliette through her personal journey. While changing a girl's life, mentors will connect with other adults and learn new skills!

VOLUNTEER SUPPORT

The Service Unit Manager is an administrative volunteer who provides support to local troop volunteers, oversees monthly meetings for area volunteers, and helps recruit girls and adults. The Service Area Manager can also help Juliette families stay connected to other Girl Scouts in the area.

My Service Unit Manager is: _____

Phone number: _____

Email: _____

GIRL SCOUTS HEART OF MICHIGAN STAFF SUPPORT

The Juliette Coordinator is your staff contact for general questions about Girl Scouts and the Juliette Program.

My Juliette Coordinator is: _____

Phone: _____

Email: _____

The Program Specialist is your staff contact for information about council programs, events, and camp.

My Program Specialist is: _____

Phone: _____

Email: _____

The Product Program Specialist is your staff contact for information and questions about the Girl Scout Cookie Program and Treats & Reads.

My Product Program Specialist is: _____





Phone: _____

Email: _____

Girl Scouts Heart of Michigan

Regional Centers, Shops, and Camp Facilities

Council Properties Key

-  Camp
(Rentals & Programming)
-  Cabin
-  Regional Center &
Retail Shops
-  Counties within Girl Scouts
Heart of Michigan Council

1. Saginaw Regional Center

5470 Davis Road, Saginaw, MI 48604
989-799-9565

2. Kalamazoo Regional Center, Kalamazoo, MI

601 W. Maple Street, Kalamazoo, MI 49008
269-343-1516

3. Camp Linden, Linden, MI

5285 Hogan Road, Linden, MI 48451

4. Camp Merrie Woode, Plainwell, MI

12584 Burchett Road, Plainwell, MI 49080

5. Camp O' the Hills, Brooklyn, MI

2100 Pink Street, Brooklyn, MI 49230

6. Camp Wacousta, Wacousta, MI

13360 Wacousta Road, Grand Ledge, MI 48837

7. Ann Arbor Regional Center

1671 Plymouth Rd, Ann Arbor, MI 48105
734-714-5140

8. Jackson Regional Center

4403 Francis Street, Jackson, MI 49203
517-784-8543

9. Lansing Regional Center at Camp Wacousta

13287 Wacousta Road, Grand Ledge, MI 48837
517-699-9400

10. The Hut

177 N. Fourth Street
West Branch, MI 48661

11. Barbara Osterman Cabin

400 Geza Road
Alma, MI 48801

12. Jane Harris Cabin

1711 West High Street
Mt. Pleasant, MI 48858

